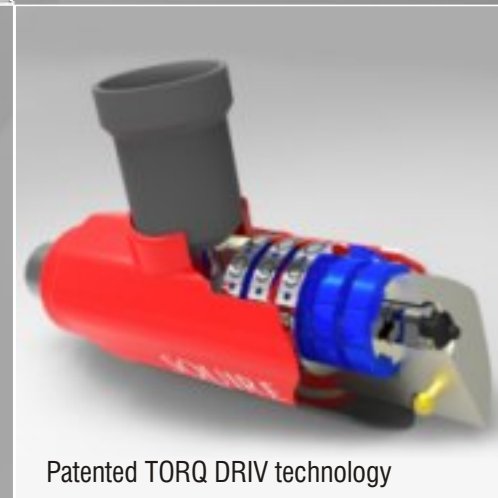
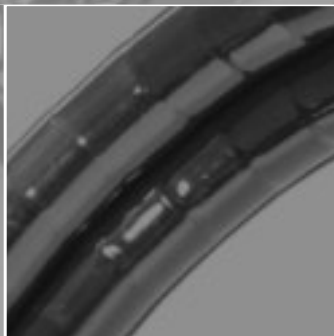


MAKO™

combi

Features at a glance

- No Keys to Lose.
- New octagonal cable design, for ease of handling.
- Sold Secure Bronze and Silver.
- Five wheel combination lock - 100,000 possible combinations.
- Easy to store and carry, all cable locks come with the universal MAKO carrying bracket.
- Squire's 10 year guarantee on all locks as standard.



Patented TORQ DRIV technology



MAKO™ combi armoured cable lock



No keys
to lose

13

security
rating



universal
carrying bracket



PATENTED

MAKO™ Combi Armoured

AD25/1200 Armoured cable lock

combination

- Hardened steel cups
- Recodable 5 wheel combination
100,000 combinations
- Patented TORQ DRIV technology
- 25mm diameter
- 1200mm length
- Armoured steel lock body
- Includes Universal Carrying
bracket

Product Code: MAKOCOMBI AD25/1200



PATENTED

MAKO™ combi chains



No keys
to lose

13

security
rating



PATENTED

MAKO™ Combi

CN 8/900 Integrated lock and chain

combination

- Integrated Chainlock
- Recodable 5 wheel combination
100,000 combinations
- Patented TORQ DRIV technology
- Hardened alloy steel chain 8mm
diameter
- 900mm length
- Armoured steel lock body

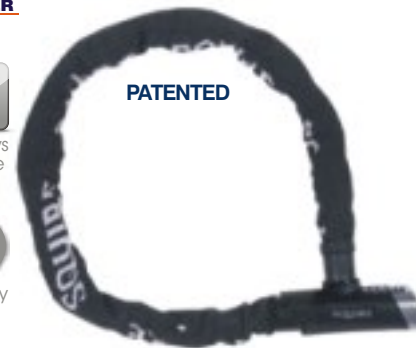
Product Code: MAKOCOMBI CN8/900



No keys
to lose

13

security
rating



PATENTED

MAKO™ Combi

CN 8/600 Integrated lock and chain

combination

- Integrated Chainlock
- Recodable 5 wheel combination
100,000 combinations
- Patented TORQ DRIV technology
- Hardened alloy steel chain 8mm
diameter
- 600mm length
- Armoured steel lock body

Product Code: MAKOCOMBI CN8/600

MAKO™ combi

the reassurance of Sold Secure with no keys to lose

The Mako Combi Range is truly innovative in that it offers the reassurance your customers value from the Sold Secure mark, whilst being a 'key free' security product.

Combination does not mean that your customers need to lower their security expectations. Squire's UK based R&D team have ensured that the product's performance is excellent, whilst being an attractive, modern lock styled to attract an ever more design conscious customer.

These locks are easy to carry on the bike whilst being ridden. They come with their own carrying bracket which retains the lock neatly whilst in transit.



MAKO™ combination cable locks



No keys to lose



12 security rating



universal carrying bracket



Octagonal cable



MAKO™ combi 25/1200 PLUS cable lock

combination

- Recodable 5 wheel combination
- 100,000 combinations
- Patented TORQ DRIV technology
- 25mm diameter
- 1200mm length
- Armoured steel lock body
- Carrying bracket included
- Octagonal cable design

Product Code: MAKOCOMBI 25/1200



No keys to lose



12 security rating



universal carrying bracket



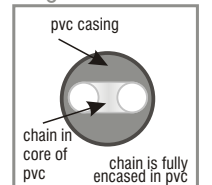
MAKO™ combi CONGR™ Hardened steel chain encased in pvc

combination

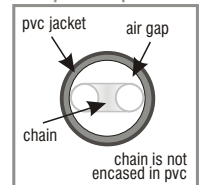
- Patented hardened Steel chain encased in PVC for easy handling
- Strength of a chainlock with the flexibility of a cablelock
- Recodable 5 wheel combination 100,000 combinations
- Patented TORQ DRIV technology
- 25mm diameter
- 900mm length
- Armoured steel lock body
- Includes Universal Carrying bracket

Product Code: MAKOCOMBI CONGR

congr cross section



competitors products





No keys to lose

12

security rating



universal carrying bracket



Octagonal cable

MAKO™ combi 18/900 PLUS cable lock

combination

- Recodable 5 wheel combination
- 100,000 combinations
- Patented TORQ DRIV technology
- 18mm diameter
- 900mm length
- Armoured steel lock body
- Carrying bracket included
- Octagonal cable design

Product Code: MAKOCOMBI 18/900



No keys to lose

12

security rating



universal carrying bracket



Octagonal cable

MAKO™ combi 18/1800 PLUS cable

combination

- Recodable 5 wheel combination
- 100,000 combinations
- Patented TORQ DRIV technology
- 18mm diameter
- 1800mm length
- Armoured steel lock body
- Carrying bracket included
- Octagonal cable design

Product Code: MAKOCOMBI 18/1800



How to open and close the MAKO™ combi lock

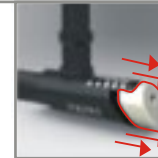
1



To open

Set the wheels to 00000 if it is the first time you have opened your lock or your own code if you have already set a chosen code.

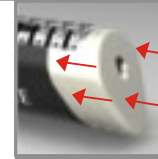
2



Pull the silver head on the lock body back away from the combination dials.

You will now be able to open the lock.

3

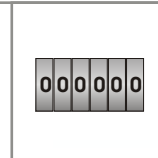


To close the lock

To close the lock simply push the silver head back in and shuffle the wheels

How to set your own code

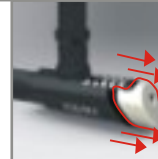
1



Set the wheels to 00000

The lock comes preset at the factory to 00000

2



Pull the head plate on the lock body down away from the combination dials

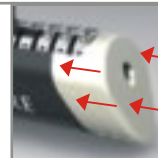
3



Use the recoding tool to turn the wheels to your chosen numbers

Make sure the numbers are perfectly aligned against the indicator mark

4



When finished push the silver head back
The lock is now set to your code